



Single Family  
**Kingston**  
Available in 11 Communities



# Call for Price

- 4 Elevations Available
- 4 Bedrooms
- 2.5 Bathrooms
- 3,068+ Sq. Ft.
- 2 Car Garage

This two-story home with over 3,000 sq. feet includes a 2-car garage with mudroom entry. To the front of the home is a versatile living room and a formal dining room with an optional tray ceiling. A 2-story great room with optional gas fireplace opens to the breakfast area and kitchen. The laundry room is on the 2nd floor convenient to the bedrooms. The owner's suite with an expansive closet and private bathroom can be upgraded. An optional recreation room can be added to the 2nd floor for additional living space. A grand, 2-story foyer option can also be added to the home.

## Available Elevations



Upgraded Transitional B



Upgraded Traditional A

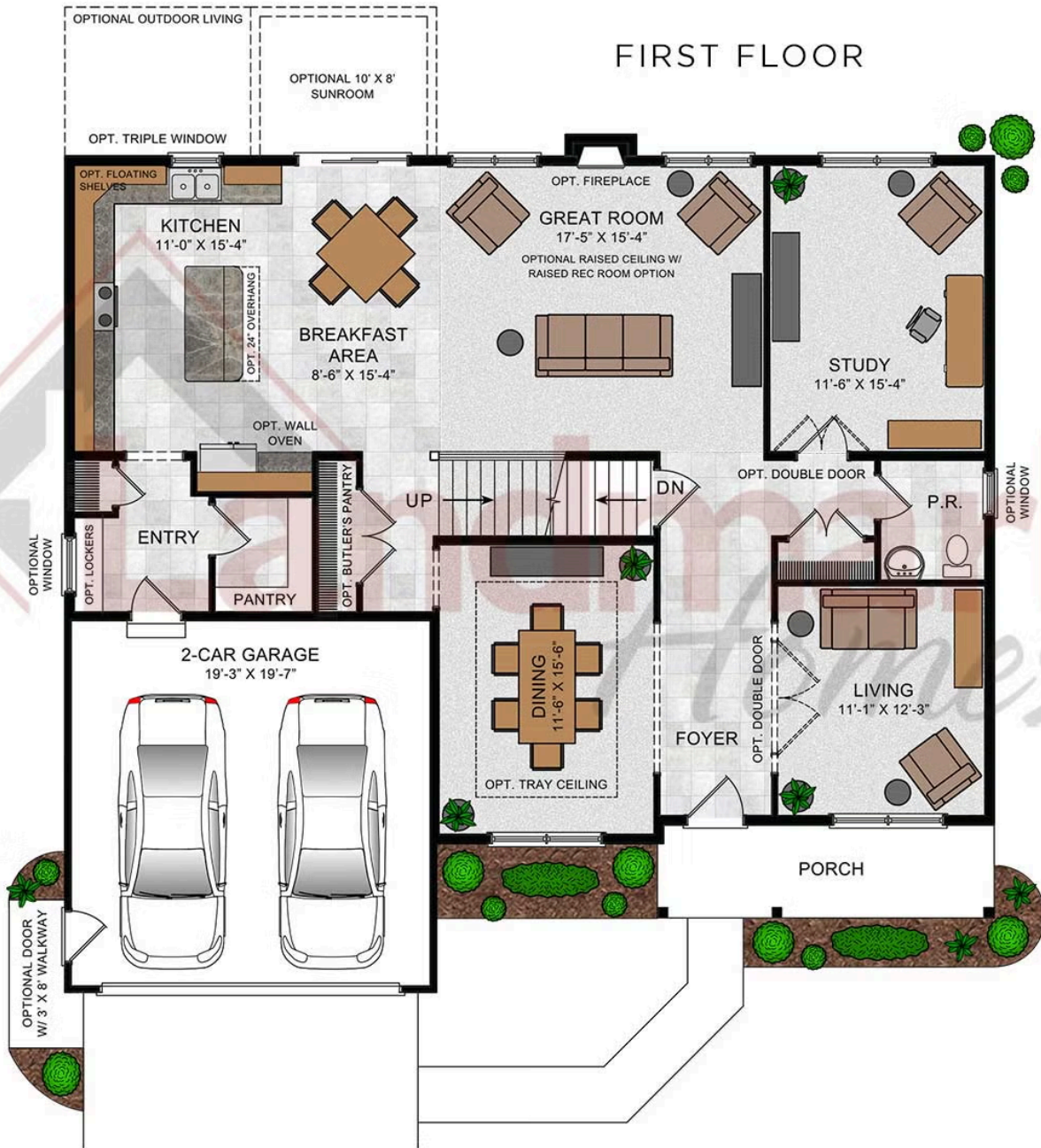


Upgraded Trademark C



Upgraded Contemporary Elevation





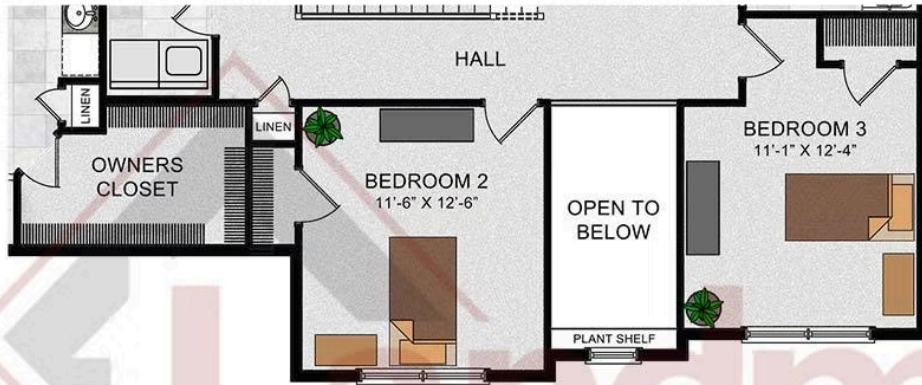
© 2023 Landmark Builders, Inc. We enforce our intellectual property rights to the fullest extent permitted by applicable law. Elevations and landscaping are artists' conceptions only. Floor plans may vary depending on elevation selected. Actual construction documents take precedence over artwork.

SECOND FLOOR



© 2022 Landmark Builders, Inc. We enforce our intellectual property rights to the fullest extent permitted by applicable law. Elevations and landscaping are artists' conceptions only. Floor plans may vary depending on elevation selected. Actual construction documents take precedence over artwork.

OPTIONAL OPEN FOYER



OPTIONAL BEDROOM 2 FULL BATH



OPTIONAL FIRST FLOOR GUEST SUITE



© 2022 Landmark Builders, Inc. We enforce our intellectual property rights to the fullest extent permitted by applicable law. Elevations and landscaping are artists' conceptions only. Floor plans may vary depending on elevation selected. Actual construction documents take precedence over artwork.



# Single Family Kingston

Available in 11 Communities

## Available Communities 1/2



### Hawk Valley Estates

200 West Valley Rd  
Denver, PA 17517

1/2 Acre Homesites

Single Family Homes Starting at  
**\$574,000**

3-5 Bed 2.5-3.5 Bath 2180+ Ft<sup>2</sup>



### Mountaindale

4817 Mountainrise Drive  
Harrisburg, PA 17110

Spacious, Wooded Homesites

Single Family Homes Starting at  
**\$704,700**

3-4 Bed 2.5-3.5 Bath 2711+ Ft<sup>2</sup>



### Mountain View Estates

114 Blue Mountain Blvd  
Carlisle, PA 17013

Mountain Views and Generous Homesites

Single Family Homes Starting at  
**\$470,400**

2-5 Bed 2-3 Bath 1829+ Ft<sup>2</sup>



### Summer Layne

501 Sunset Blvd  
Annville, PA 17003

Palmyra Area School District

Single Family Homes Starting at  
**\$532,100**

3-5 Bed 2-4 Bath 2142+ Ft<sup>2</sup>



### Wyndale

108 Wyndale Dr  
Ephrata, PA 17522

Walking Trails and Playground

Single Family Homes Starting at  
**\$512,700**

2-4 Bed 2-3.5 Bath 1839+ Ft<sup>2</sup>



### Copper Ridge Single Family

157 Copper Ridge Dr  
Newmanstown, PA 17073

Stunning Hilltop Views

Single Family Homes Starting at  
**\$439,100**

2-4 Bed 2-2.5 Bath 1839+ Ft<sup>2</sup>





Single Family  
**Kingston**

Available in 11 Communities

## Available Communities 2/2



### Fox Bend

250 Dahlia Circle  
Lebanon, PA 17042

Generous Homesites with Scenic Views

Single Family Homes Starting at  
**\$496,700**

3-4 Bed 2.5-3.5 Bath 2180+ Ft<sup>2</sup>



### The Meadows at Colonial Club

1002 Edorma Court  
Harrisburg, PA 17112

Large Homesites

Single Family Homes Starting at  
**\$749,800**

4-5 Bed 2.5-3.5 Bath 2868+ Ft<sup>2</sup>



### Briar Ridge

834 Kimmerlings Rd  
Lebanon, PA 17046

1/2 Acre Homesites

Single Family Homes Starting at  
**\$441,600**

2-4 Bed 2-2.5 Bath 1839+ Ft<sup>2</sup>

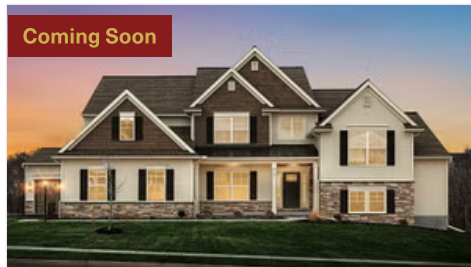


### Southgate

129 Alexandria Dr  
Anville, PA 17003

Single Family Homes Starting at  
**\$477,600**

2-4 Bed 2-3.5 Bath 1911+ Ft<sup>2</sup>



### Quinn Estates

220 N Cornwall Rd E  
Lebanon, PA 17042

1 Acre Homesites

Single Family Homes

3-4 Bed 2-3.5 Bath 2386+ Ft<sup>2</sup>

